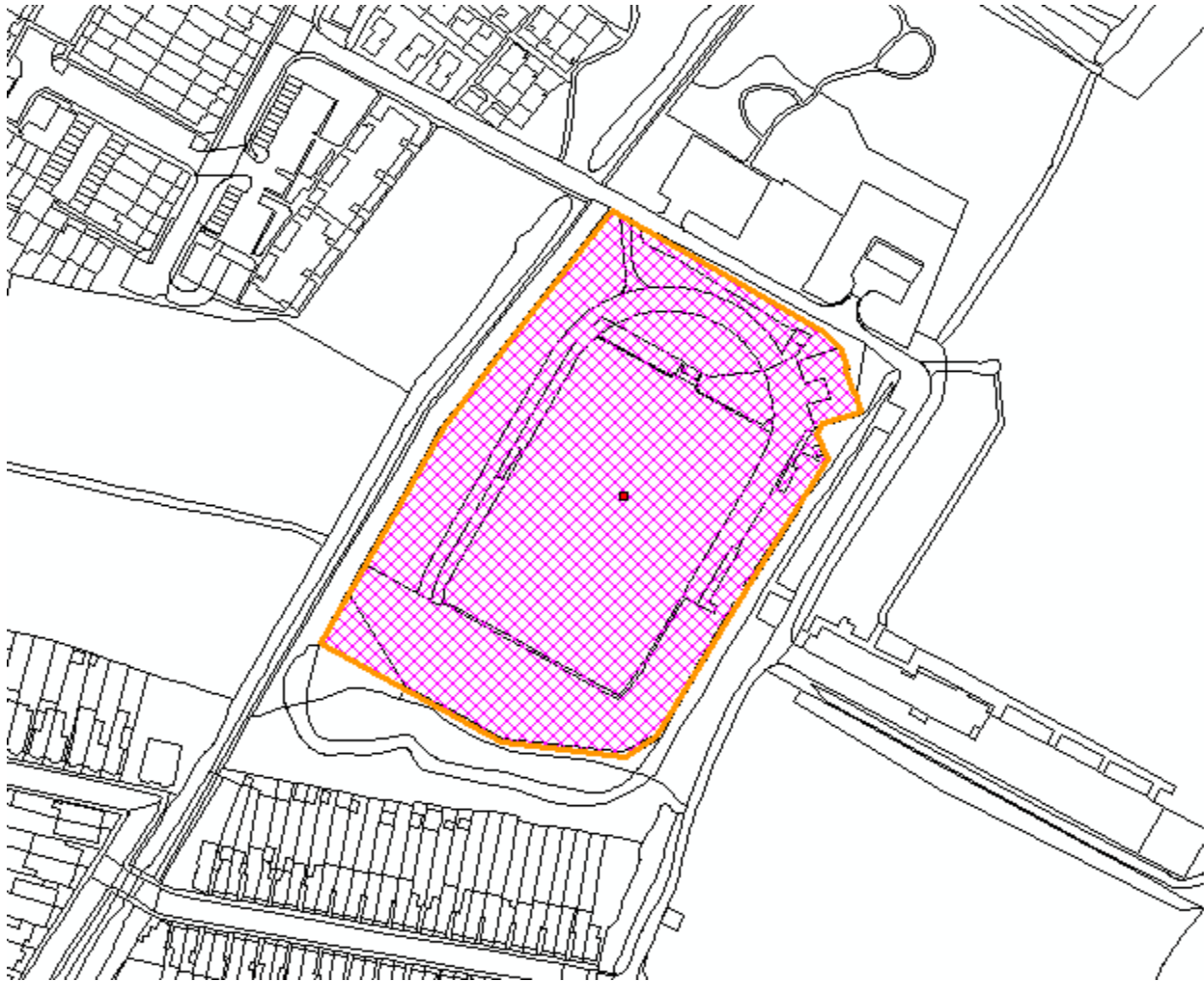


23/01704/FUL – THE CITY GROUND, HILLIER WAY, WINCHESTER



AERIAL PHOTO



HILLIER WAY – LOOKING SOUTH EAST



EXISTING GROUND - LOOKING SOUTH-WEST



PROPOSED BLOCK PLAN

- LEGEND**
- GRASS SURFACE
 - NATURAL ENVIRONMENT AREA
 - IMPROVED VEHICLE ACCESS AND CIRCULATION AND NEW PARKING SPACES (NEW GRAVEL SURFACE)
 - EXISTING VEHICLE ACCESS AND CIRCULATION AND NEW PARKING SPACES (GRAVEL WITH NEW SURFACE DRESSING)
 - EXISTING VEHICLE ACCESS AND CIRCULATION (GRAVEL - NO WORK PROPOSED)
 - NEW 3G ARTIFICIAL TURF SURFACE
 - RETAINED PAVEMENT - HARD STANDING SURFACE (ASPHALT / CONCRETE)
 - NEW PAVEMENT AND ACCESSIBLE PARKING SPACES - HARD STANDING SURFACE (POROUS ASPHALT)
 - BUILDING (CLUBHOUSE)
 - REPLACEMENT PREFABRICATED BUILDING (TOILET BLOCK)
 - RETAINED AND NEW PREFABRICATED BUILDING (SPORTS CAFE AND SPECTATOR STANDS)
 - EXISTING TREE WITH RPA (ROOT PROTECTION AREA)
 - PRELIMINARY FINISHED FLOOR LEVEL

- IMPROVED ACCESS AND PARKING FACILITIES**
- 4NO. ACCESSIBLE CAR PARKING SPACES
 - 40NO. STANDARD CAR PARKING SPACES
 - 4NO. MINI BUS PARKING SPACES
 - POWERED TWO WHEELER PARKING AREA
 - COVERED CYCLE PARKING AREA
 - DROP OFF / PICK UP ZONE
 - ADDITIONAL MATCHDAY PARKING AREA

- BIODIVERSITY ENHANCEMENTS**
- BIRD NEST BOXES FIXED TO TREES FACING SOUTH EAST
 - NATIVE SPRING BULBS PLANTED UNDER TREES AND SHRUBS INCLUDING SNOWDROPS, DAFFODILS (NATIVE IF POSSIBLE), FRITILLARIES, CROCUSES AND OTHER SPRING BULBS
 - UNDER PLANTING OF WOODLAND SPECIES LIKE WOOD ANEMONE, LESSER CELANDINE AND VIOLETS, BLUEBELLS AND RAMSONS (WILD GARLIC) WITH RED CAMPION AND HONESTY, AND WILD ROSES (FIELD ROSE, DOG ROSE)
 - HOUSE MARTIN NEST BOXES FIXED TO CLUBHOUSE
 - GRASSED AREAS COVERED WITH WILD FLOWERING LAWN PLANTS THAT TOLERATE REGULAR MOWING
 - AREAS OF EXISTING MATURE IVY
 - AREA OF EXISTING MATURE BRAMBLE PATCH

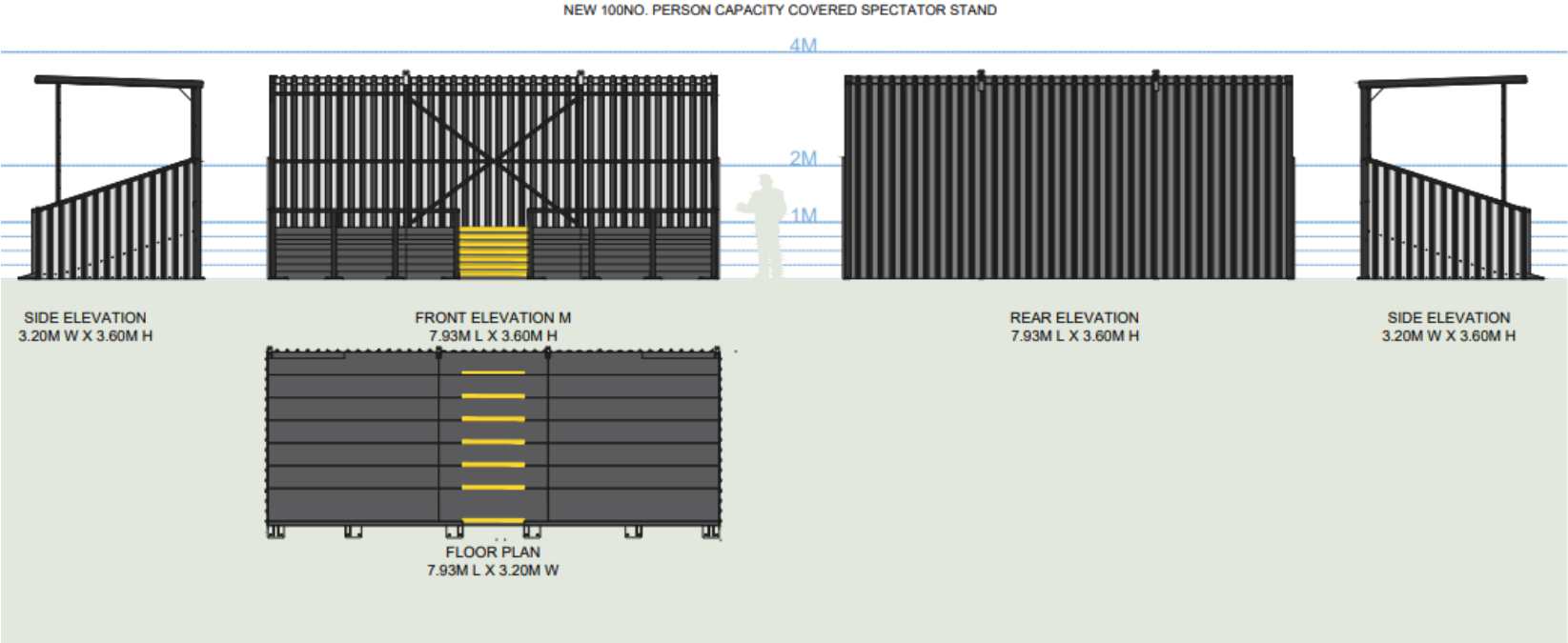
- BIODIVERSITY HAZARD**
- AREA OF JAPANESE KNOTWEED



LANDSCAPE TYPE

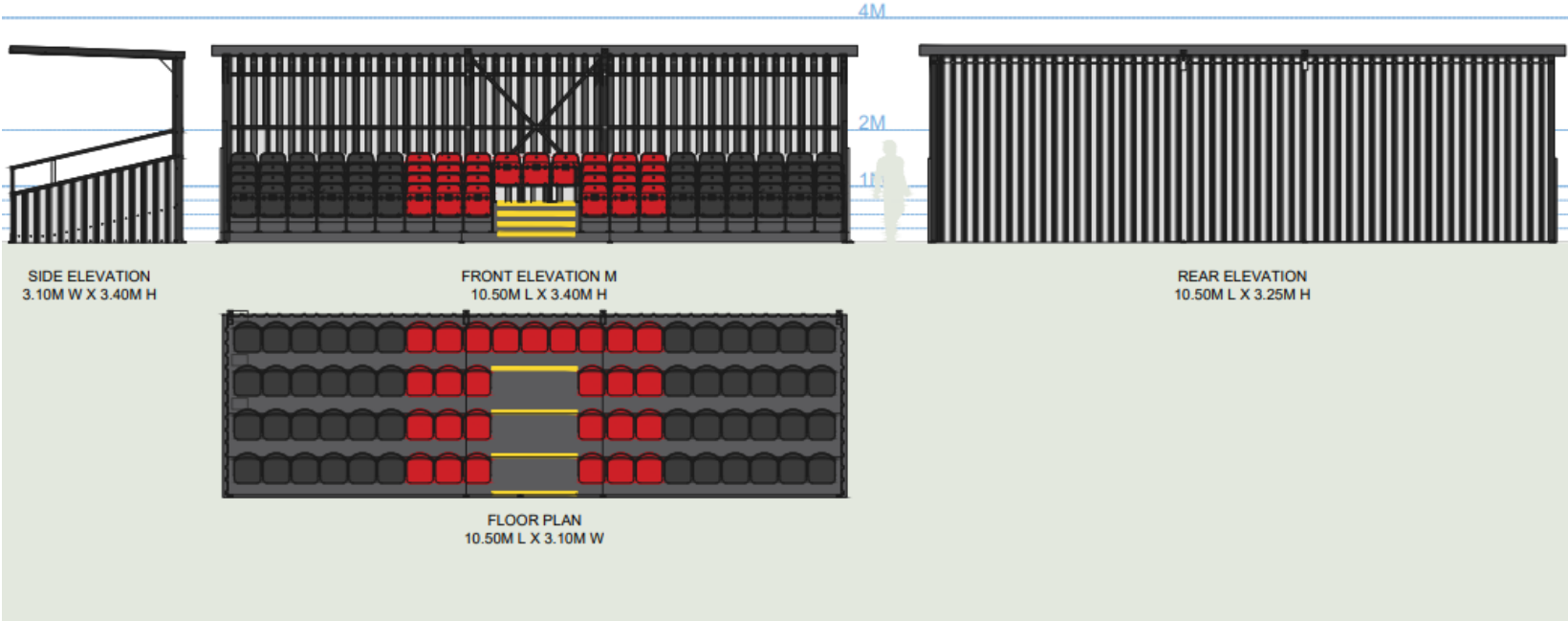
3G ARTIFICIAL TURF SURFACES	1457	M2
GRAVEL SURFACES (ACCESS, CIRCULATION AND PARKING)	2238	M2
HARD STANDING SURFACES (RETAINED PAVEMENTS)	3450	M2
HARD STANDING SURFACES (NEW PAVEMENTS)	1014	M2
GRASS SURFACES	5851	M2
NATURAL ENVIRONMENT AREA	1295	M2
BIO-DIVERSITY ENHANCEMENT AREAS	1218	M2

PROPOSED NEW STAND (1)

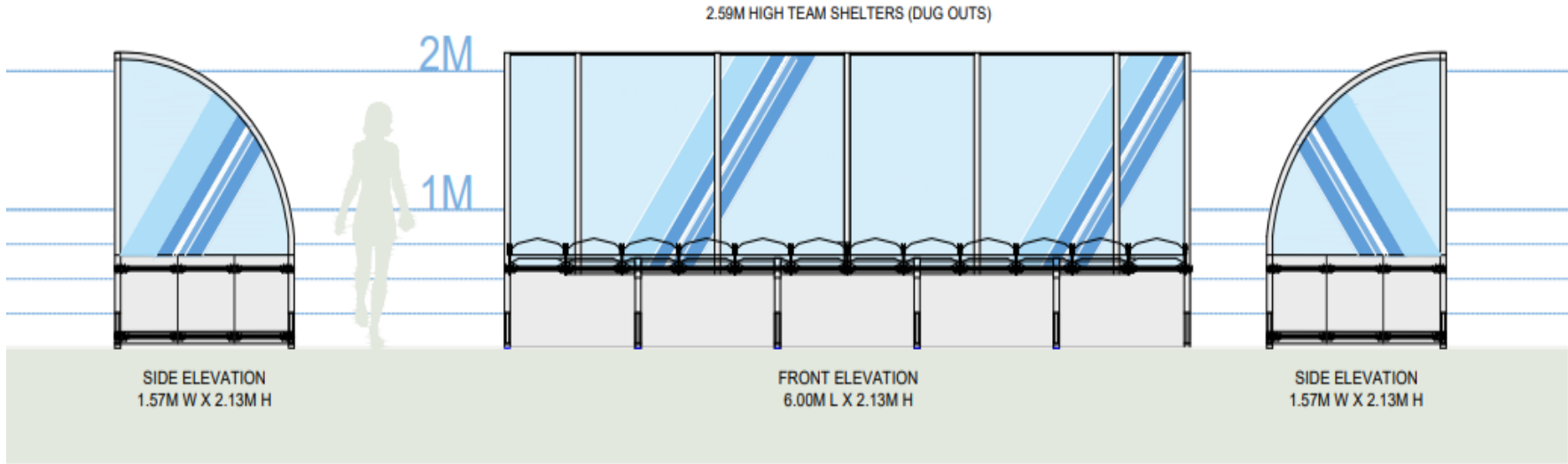


PROPOSED NEW STAND (2)

NEW 75NO. PERSON CAPACITY COVERED SEATED SPECTATOR STAND



DUGOUT ELEVATIONS



FENCE ELEVATIONS

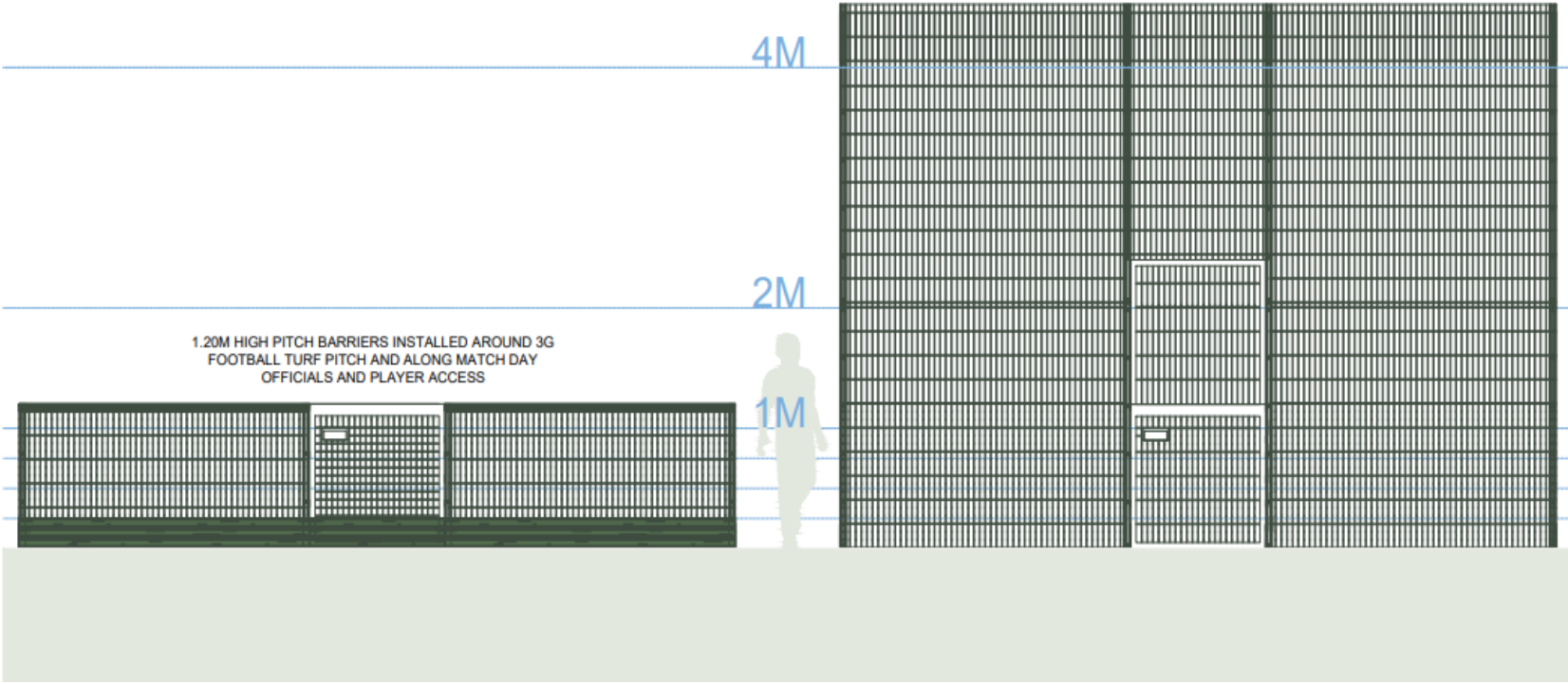
4.50M HIGH BALL STOP FENCING INSTALLED AROUND
3G FOOTBALL TURF PITCH FACILITY PERIMETER

4M

2M

1M

1.20M HIGH PITCH BARRIERS INSTALLED AROUND 3G
FOOTBALL TURF PITCH AND ALONG MATCH DAY
OFFICIALS AND PLAYER ACCESS



EXAMPLE OF AN ARTIFICIAL GRASS PITCH

